

Appendix J – Board Decision-Making Framework

Agency Priorities

Does the resolution fit within the Mission of the Agency?

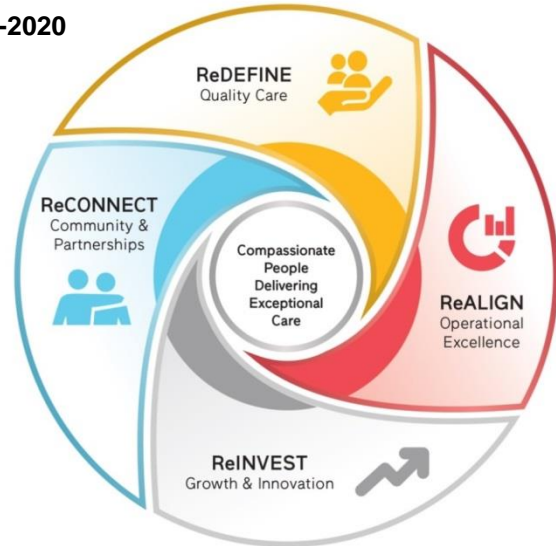
Sinai Health System delivers exceptional care in hospital, community and home, focusing on the health conditions with the greatest impact on the overall health of the population. We discover and translate scientific breakthroughs, develop practical health solutions, educate future clinical and scientific leaders, and lead efforts to eliminate health inequities.

Will the resolution help foster the Vision of the Agency?

Canada’s leading integrated health system, pushing the boundaries to realize the best health and care from healthy beginnings to healthy aging for people with complex health needs.

Strategic Plan 2017-2020

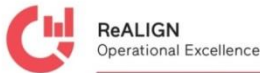
Our priorities reflect a commitment to transforming the delivery of care to better meet the needs of clients and caregivers.



- Leverage connections across SHS to improve the client experience
- Foster strategic alliances to support healthier populations
- Advocate for clients and caregivers through community outreach and donor engagement



- Incorporate client perspective in all facets of care delivery
- Enhance quality through integration of best practices
- Strengthen our health and safety-driven culture



- Optimize operational processes through automation and process improvement
- Achieve performance excellence through analytics and evidence-informed decisions
- Consistently deliver on funded commitments



- Recruit and retain top talent through a supportive learning culture
- Develop leading-edge and responsive client-centred services
- Drive transformative technology solutions

Circle of Care Strategic Plan 2017-2020

Does the resolution foster the agency’s Strategic Plan and the goals within?

Is the resolution consistent with Agency Values?

Person-Centred Care; Excellence; Accountability; Collaboration; Equity; Innovation

Analyse the situation:

Publicity Test:

Could you defend your choice if it were made public?

Reversibility:

Could you defend your reasoning if you were on the losing end of your decision?

Generalizability:

Could you defend using this same reasoning in similar cases?